



Prices

Stay at our Mercury luxury hotel and suites for the amazing prices at:

- One night... 25 mercuries
- Three nights... 65 mercuries
- Five nights... 115 mercuries

Custom vacation packages available!

For information contact:

1-800 Mercury (637-2879)



Mercury Travel Agents

1234 Milky Way

Suite Spot 88

Caloris Basin, ME 89877

Phone: 1-800 637-2879

Fax: (800) 555-0109

<http://www.murcurytravelagents.com>

Mercury Travel Agents
*For all your Space Travel
and Vacation Needs*

MERCURY VACATIONS

Volcanic Skiing and more

Day and Night Life

Like no other place in the
Universe



GO ON A 10 DAY VACATION

- The five second sun tan
 - 176 hour a day
 - Exciting location
 - Excellent accommodations
 - Competitive prices
 - Opportunity to relax
-

VACATION PLANS

ONE DAY AND NIGHT

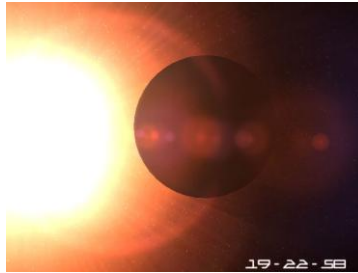
Do you like to party all day?

One mercurial solar day takes 176 Earth's days, or 2 whole mercurial years.

Mercury is the planet for hot bodies
Mercury is the closest to the Sun and the eight largest, so you won't have to pack many clothes. We have built one of the biggest museums of the entire Solar System, so you can spend one whole day looking at the types of rocks that you see no where else. (Our rocks have the highest metal concentration of any planet.)

An analysis of the Mariner Probe data provided some preliminary evidence of recent volcanism on Mercury, so you and your family should come prepared with cameras to take pictures, of the beautiful color of the lava.

If you think that all this family stuff is not for you, you must see our skiing area, which will not be open until December because amazingly meteor rains.



ACCOMENDATIONS

Hotel:

- If you have the Mercury munchies, eat at one of over 500 gourmet restaurants
- Relax and enjoy our private sunroom at 842° F
- Experience our amazing suits with Mercury mints and Jacuzzis!
- Come enjoy a Mercury margaritas and Mercury cocktails.
- Shop till you drop at our first planet mall.
- Spend the day playing crater golf or twilight tennis.
- Have a day full of fun skiing at our - 292° F ski area in December

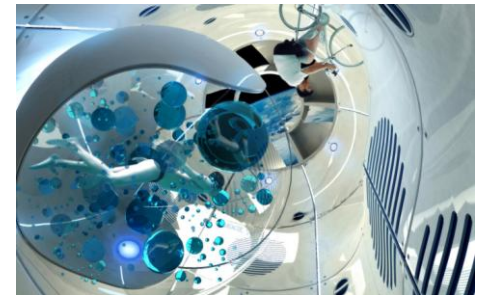
The spacecraft will travel at 12,000,000 mph for 4 days and will arrive at on Mercury at sunset.

You will have a luxury stateroom for your journey to include:

*Massages Daily
Gourmet Meals
Valet Service*

INFORMATION

If you love geology you'll love Mercury. In fact we think that after seeing Mercury you'll never return to the Grand Canyon again. Mercury has a heavily cratered surface that closely resembles the earth's moon. Mercury also has huge cliffs crisscrossing the planet, as high as 3 kilometers (1.2 miles) and as long as 500 kilometers (310 miles). And with all that, if you like variety Mercury has the most extreme temperatures variations in the Solar System - from 90 K to 700 K. We are the only planet with those kinds of extreme temperature changes.



Hotel Manger: Sarah Hill

Hotel Security: Estefani Toledo

Hotel Valet: Kelley Lanchbury

Hotel Services: Ralph Lehtinen